

COMPANY PROFILE

CARLO GAVAZZI ARABIA CO. LTD.

38 years of presence in Saudi Arabia



MILESTONES

- 1931** **Mr. Carlo Gavazzi** registers the individual proprietorship in Milan, Italy.
- 1982** Established in **Saudi Arabia** as **Carlo Gavazzi Yam Co. Ltd.** under the Sponsorship of the Yam Establishment for Business in the field of E&I.
- 2000** Name is changed to **Carlo Gavazzi Arabia Co. Ltd.**
- 2012** The Italian company **Bonatti S.p.A.** acquires 100% of Carlo Gavazzi Impianti's shares of Carlo Gavazzi Arabia Co. Ltd.
- 2018** Carlo Gavazzi Arabia establishes its subsidiary in Bahrain under the name of Carlo Gavazzi Bahrain WLL

CORPORATE ORGANIZATION



BONATTI S.P.A. : OUR MAIN SHAREHOLDER AT A GLANCE

- 13 local companies
- 44 years of experience in solar plants
- 75 years in energy industry
- 97% average local workforce
- 10,000 employees
- 25,000,000 hours worked in 2019
- 1 billion USD: revenues 2019

- Bonatti ranks **88th** this year among International Contractors.

RANK		FIRM	2019 REVENUE \$ MIL.		2019 NEW CONTRACTS \$ MIL.
2020	2019		INT'L	TOTAL	
88	94	BONATTI SPA, Parma, Italy†	946.0	987.0	850.0

VISION, MISSION AND VALUES



OUR VISION

To be globally recognized as a leading Construction company in the field of Electrical and Instrumentation System.

OUR MISSION

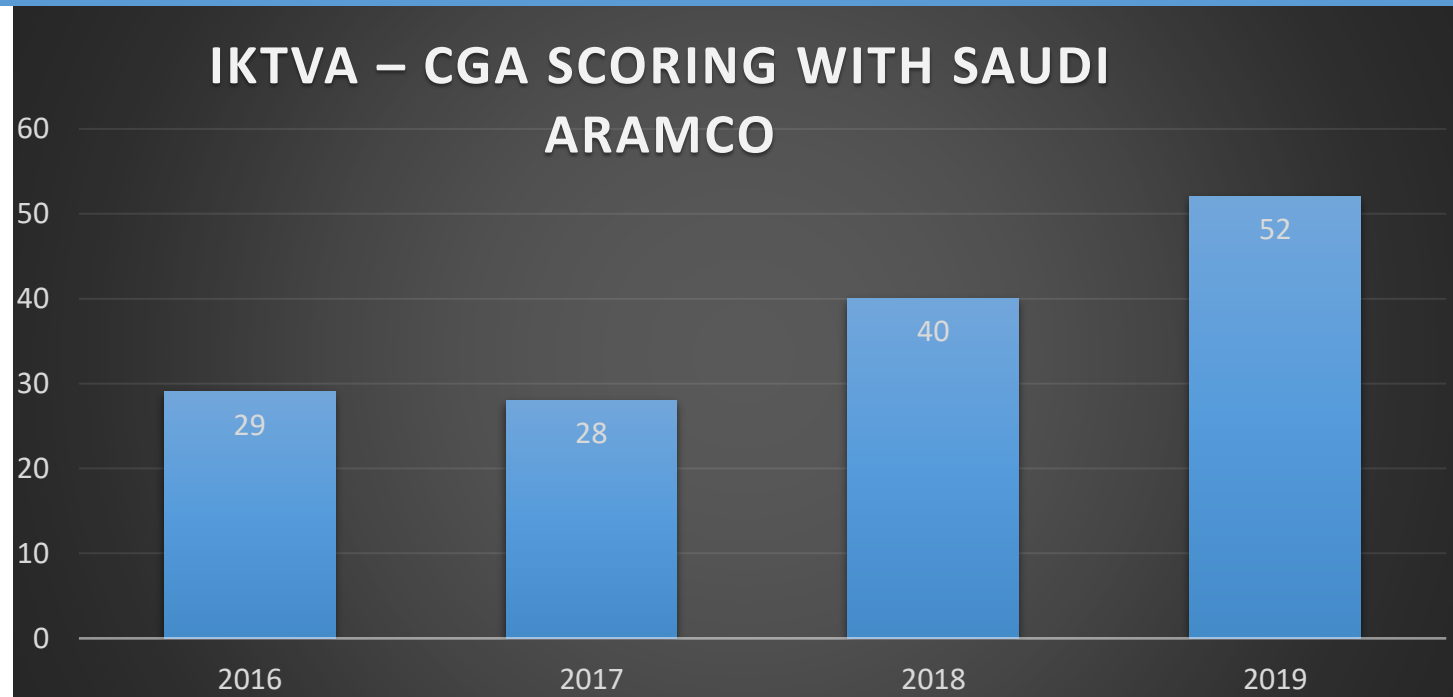
To render service that consistently meets customer expectations and compliance requirements and enhance customer satisfaction through effective application of work processes in quality, safety and environmental protection for continual improvement.

OUR VALUES

- **PEOPLE**
 - We respect diversity of people and support their welfare.
 - We commit to the development of our work force.
- **PRIDE**
 - We take pride of what we do.
 - We are committed to excellence, safety, quality and environment.

SAUDIZATION FULLY GREEN

- CGA is not only proud to provide engineering and construction services in Electrical & Instrumentation sector, but we are also committed to fully comply with Saudization in line with IKTVA and Vision 2030.
- We are focused on training and enhancing Saudi people; we have more than 120 Saudi nationals in our workforce, with personalized training and developing plan.
- Below are the IKTVA score achieved with Saudi Aramco in the last 4 years.



DELIVERING KNOW HOW

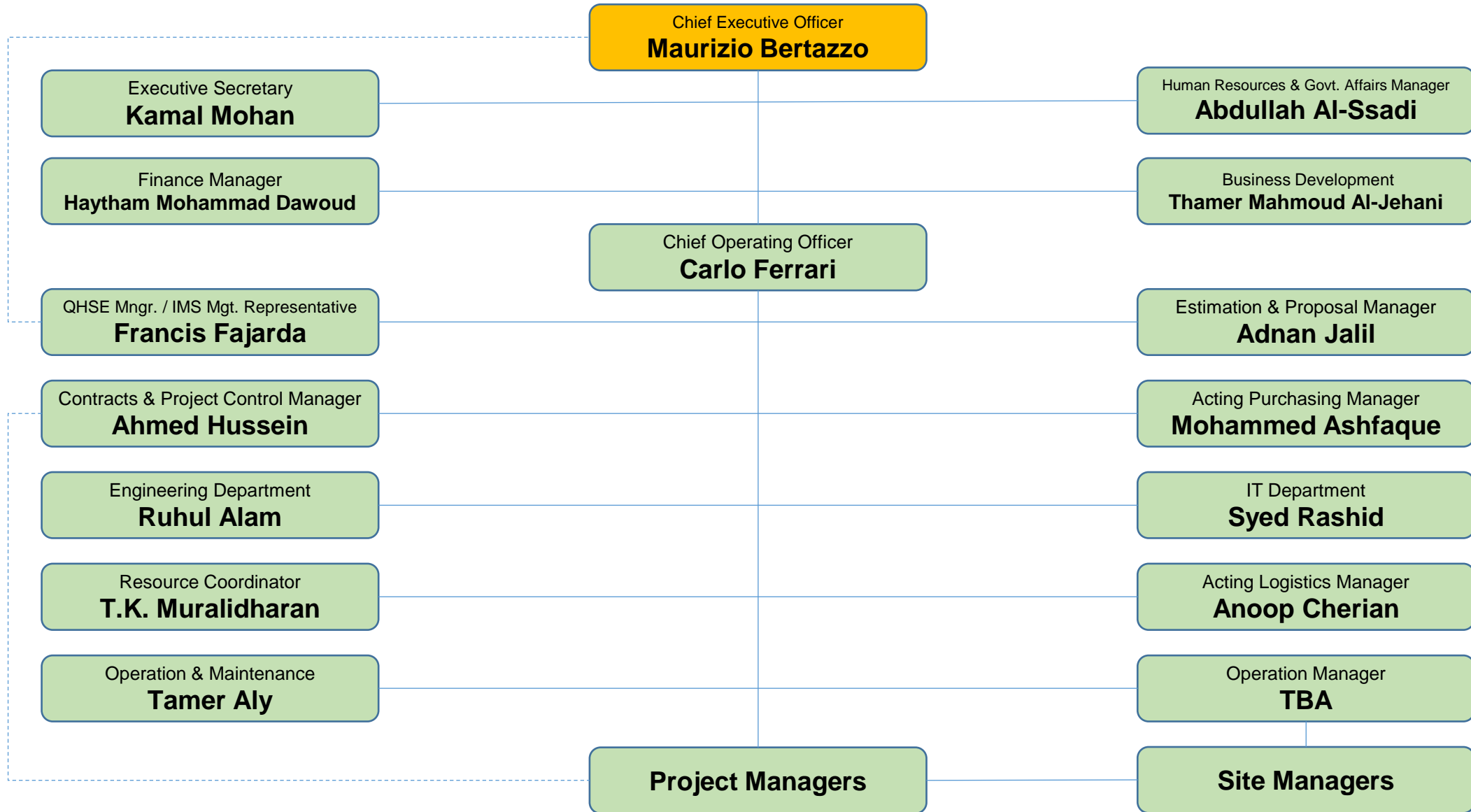


Know How & Experience

Flexibility & Competitiveness

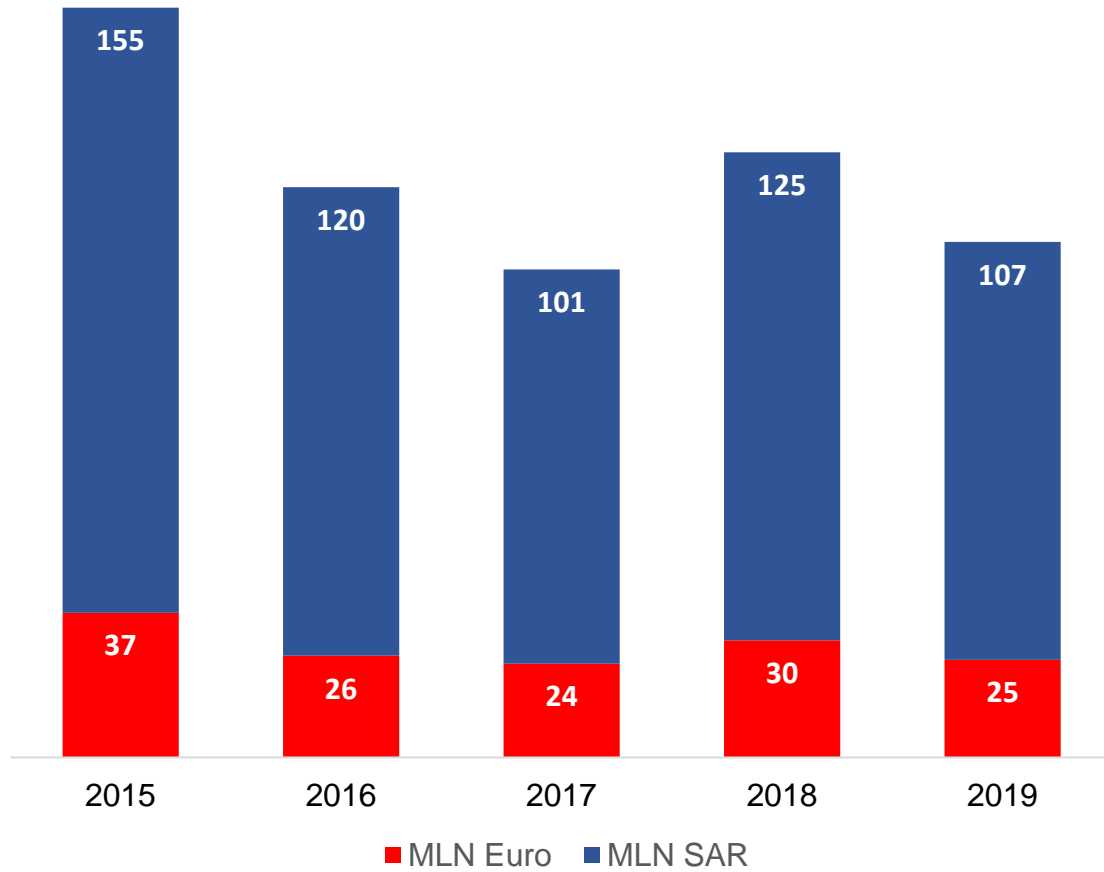
Reliability & Efficiency

COMPANY LEADERSHIP

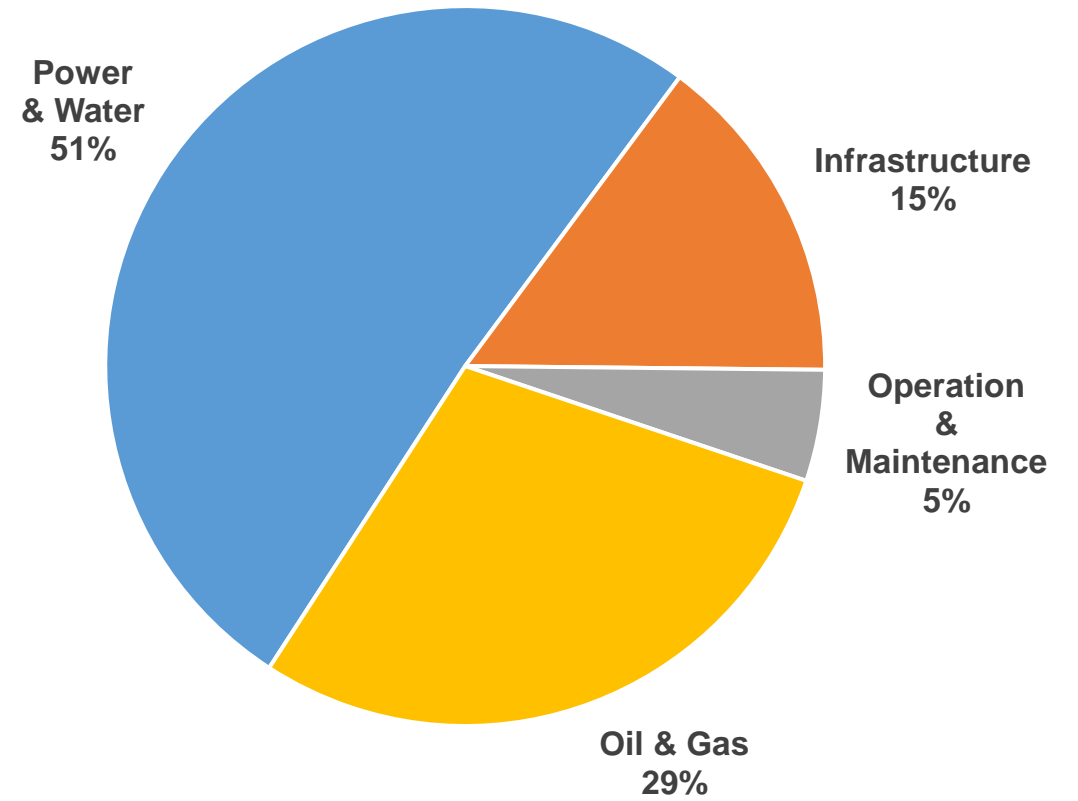


MAIN ECONOMIC DATA – LAST 5 YEARS

TURNOVER



INDUSTRIES



EXECUTING TURNKEY PROJECTS: OUR IN-HOUSE CAPABILITIES

CORE BUSINESS		
ELECTRICAL	INSTRUMENTATION	CONTROL SYSTEMS

ACTIVITIES	Detail Engineering
	Procurement
	Construction
	Erection
	Installation
	Pre-Commissioning
	commissioning
	Field Services & Maintenance
	Revamping & Upgrading
	Testing

INDUSTRIES	Power Plants
	Substations
	Water Treatment
	Desalination
	Oil & Gas
	GOSPs
	Petrochemical
	Steel Plants
	Railways systems
	Pharmaceutical
Hospitals	

WITH THE SUPPORT OF BONATTI AND CARLO GAVAZZI IMPIANTI	HV – MV – LV Substations & Power plants
	Small Power & Lighting <i>incl. design & engineering</i>
	System Integration
	Railways signaling systems
	Shut down & Hot cut over activity
	Fire Detection & Alarm System
	CCTV, Paging System, Telecom

ELECTRICAL CAPABILITIES

- HV, MV & LV Transformers Installation & Pre-commissioning *all ratings, excitation, isolation, neutral grounding unit auxiliary, generator step-up up to 500MVA*
- Iso Phase Bus Duct (IPB), Non-Segregated Bus Duct (NSB), GIB (132kV & 380kV)
- Generator Installation & Pre-commissioning (All Ratings)
- Switchgears & Switchboards (MV & LV)
- Panel Installation (Electrical, Control & Instrumentation)
- UPS / DC systems
- Cable Pulling (HV, MV & LV)
- Cable Terminations (MV & LV)
- Cable Tray, Conduit and Raceways Power (third rail)
- Fiber Optic Cable splicing & terminations
- Certified aluminum welders
- FO / MV cable splicers (up to 33 kV)

INSTRUMENTATION CAPABILITIES

- Instrument calibration
- Instrument Installation (Field)
- Loop Test
- Instrumentation Construction Services
- Installation of Transmitters, Switches & Gauges for Pressure, Temperature Flow and Level application, Control Valves, on / off valves, Breather valves, Safety Valves, panels, junction boxes, cable laying & termination, perforated cable tray work, pedestal fabrication
- Installation of process installation, termination & commissioning of indicators, transmitters and controllers & other field instruments
- Installation including cabling, marshalling panels, instrument air/gas tubing and impulse piping
- Ability to pre-fabricate instrument support & other fabrication work for control packages
- Supply of skilled manpower including Engineers, Technicians for shut down maintenance, installation and commissioning activities

AUTOMATION CAPABILITIES

- Process Control Systems; PLC, DCS, ESD, SCADA
- Safety Instrumented Systems
- Fire & Gas (F&G) Systems
- Condition Monitoring Systems (CMS)
- Power Management Systems
- Instrument Asset Management Systems (IAMS)
- Industrial Data Networks Communication Systems & PAGA Systems
- Security: CCTV, Anti-Intrusion Systems
- Process Historian - Plant Information Management System (PIMS)
- Preventive Maintenance
- Breakdown Maintenance
- Reliability Centered Maintenance
- Condition-Based Monitoring
- Start-Up / Shutdown Services
- Reporting & Analyses
- Maintenance Management & Planning Services

PRE-COMMISSIONING CAPABILITIES

- Startup & Commissioning Services
- Motor Control Centers (MCC)
- Generator Circuit Breaker (GCB)
- Switchgears (LV & MV), including relay setting
- Control & Protection panel
- Transformers (Distribution, Excitation, Isolation, Neutral Grounding, UAT, GSUT)
incl. oil filtration
- Generators (Diesel, Emergency Diesel Generators)
- DC Battery/ UPS System
- Electrical Motors
- Instrumentation loop checking, Startup & Commissioning Services
- Calibration of Instruments

SOLAR CAPABILITIES

- Basic & Detail Engineering
- Installation Engineering
- Procurement Main Items & Bulk
- Materials Logistic Management
- Custom Management
- Personnel Accommodation Camp
- Topographic Survey
- Hydrological Study
- Soil Preparation
- Road Preparation
- Reinforced Concrete
- Excavation And Trenching
- Filed Piles Tracing
- Early Survey / Pull Off Test
- Piles Driving
- Bi-helical Pails
- Pre-cast Foundations
- Es Pre-drilling
- Electrical & Control Works
- HV Ele. Sub-station
- Cables & Panels Interconnection
- Control & Monitoring System
- Main Inverter Installation
- Precommissioning / Commissioning
- Mechanical Installation Works
- Tracker Installation
- Structures Installation
- PV Panels Installation
- PV Panels Wiring

SELECTED SOLAR PROJECT REFERENCES



First Plant installed since 1974



Several Region – 27 MW - TERNA



SARDINIA - 2 MW – REC



Abruzzo - 5 MW



LAZIO – 24 MW Tracker – BNP/REC



ABRUZZO – 6 MW - SONNEDIX



ABRUZZO - 5 MW – FORTE SOLAR



Abruzzo - 5.2 MW



PIEMONTE - 5 MW (Rooftop) - REC



PUGLIA - 8 MW - ENFINITY



UMBRIA & TUSCANY – 6MW - BEROFIN



Puglia - 3 MW



EMILIA - 3 MW - REC



PUGLIA - 5 MW - ENFINITY



LOMBARDIA – 2MW - REC



Puglia - 8 MW

OTHER SELECTED RENEWABLE AND GAS PROJECT REFERENCES



BIOMASS PP- 10 MW – CALABRIA
Client: BIOMASSE ITALIA SPA



BIOMASS PP- 11 MW – EMILIA
Client: San Marco Bioenergie



GAS STATIONS – 66 MW- Algeria
Client: Sonatrach



WIND – 9 MW (6x1.5) – TUSCANY
Client: GESPI SPA

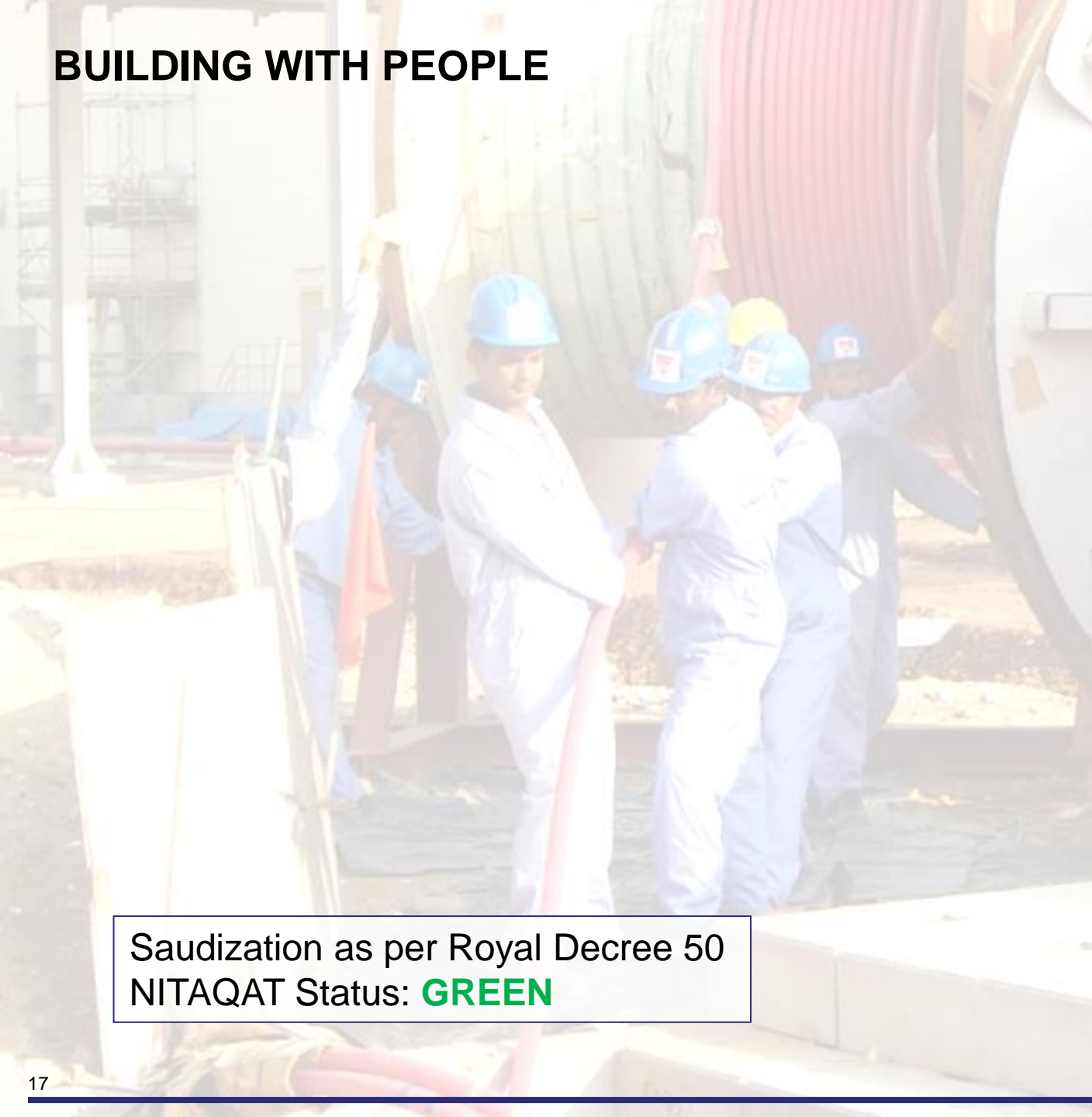


GAS STATIONS – 40 MW- SICILY
Client: Sasol



E&I Works- Hydroelectric Central
IRAQ –: National Ministry of Energy

BUILDING WITH PEOPLE



HEAD OFFICE, SITE MANAGEMENT & ADMIN	107
ENGINEERS	23
SUPERINTENDENT	18
SUPERVISOR - ELECT/INST/MECH	35
HSE ENGR / SUPERVISOR /OFFICER	33
QA/QC SUPERVISOR / INSPECTOR	22
QTY. SURVEYORS	6
MATERIAL MAN /STOREKEEPER	6
FOREMEN	104
TECHNICIANS & SKILLED	456
DRIVER /HEAVY EQUP./MECHANIC	64
SEMI-SKILLED	108
TOTAL AS OF JULY-2020 (CGA)	982
OUTSOURCED (Variable)	200
GRAND TOTAL	1182
<i>Note: Outsourced personnel may vary according to the workload</i>	

Saudization as per Royal Decree 50
NITAQAT Status: **GREEN**

BUILDING WITH PEOPLE

MANPOWER RESOURCES					
SUMMARY - CATEGORY	1 TO 4(YRS)	5 TO 9(YRS)	10 TO 15YRS	16 AND ABOVE(YRS)	QTY
HEAD OFFICE/SITE MANAGEMENT & ADMIN	41	34	22	10	107
ENGINEER	6	11	6	0	23
SUPERINTENDENT	1	9	3	5	18
SUPERVISOR - ELECT/INST/MECH	3	18	10	4	35
HSE ENGR/SUPERVISOR/OFFICER	15	14	3	1	33
QA/QC	3	9	8	2	22
QTY. SURVEYORS	3	2	1	0	6
MATERIAL/STOREKEEPER	1	2	2	1	6
FOREMAN	12	40	31	21	104
SKILLED	144	180	122	10	456
DRIVER/HEAVY EQUP./MECHANIC	7	29	21	7	64
SEMI-SKILLED	30	70	8	0	108
TOTAL	266	418	237	61	982

CONSTRUCTION EQUIPMENT & ASSETS

DESCRIPTION	QUANTITY
Mobile Crane 30/50 tons	8
Forklift	14
Man-lift	3
Air compressors	14
Boom Trucks	10
Low Bed Trucks/Heavy Duty Truck	7
Bus/Coaster	29
Ambulance	4
Pick-up car	35
Diesel generator <100KVA	34
Diesel generator >100KVA	19
Welding machine	41
Portable Welding machine	32
Cable pulling machine	8
Instrumentation Lab	7
Porta Cabins	258
Containers	90
Hi-Pot	8
Oil Filtration Machine (6000 ltrs/H)	2



LOGISTICS ORGANIZATION & CAMPS (2,100 BED CAPACITY)

TURAI – WAAD AL SHAMAL SITE OFFICE & CAMP FACILITIES FOR 600 + WORKSHOP + WAREHOUSE

JEDDAH – HEAD OFFICE & CAMP FACILITIES FOR 200 + WORKSHOP + WAREHOUSE

SHUQAIQ - SITE OFFICE & CAMP FACILITIES FOR 300 + WORKSHOP + WAREHOUSE

JUBAIL - ABU HADRIYAH CAMP FACILITIES FOR 700 + WORKSHOPS + WAREHOUSES

RIYADH - SITE OFFICE & CAMP FACILITIES FOR 300 + WORKSHOP + WAREHOUSE



ONGOING PROJECTS

Waad Al Shamal – Integrated Solar Combined Cycle Power Plant
E&I Complete Installation Package

King AbdulAziz Internat. Airport (KAIA)
E&I Works

Shuqaiq R.O Desalination Plant 450K m3/day + 132KV Substation
E&I Complete Installation Package



Hitachi Rail - Riyadh Metro Line 3 - Package B
Electro-Mechanical Installation work

King Abdullah Financial District (KAFD)
E&I Works

Base 802921AI (C00454) 1-03

SELECTED PROJECT REFERENCES

WAAD AL SHAMAL - INTEGRATED SOLAR COMBINED CYCLE POWER PLANT- TURAIIF

E&I Installation work for Combined Cycle Power Plant.

Capacity: 1422 MW – (including 50-MW Solar Thermal)

Client :- Saudi Electric Company (SEC)

Main Contractor : Abengoa/GE Consortium

Project Value : M.SAR 109

SELECTED PROJECT REFERENCES

RIYADH METRO PROJECT – LINE 3, PACKAGE B

Installation Activities of Electro-Mechanical Works for
Riyadh Metro Project Line 3, Package B

Client :- AlRiyadh Development Authority (ADA)

Main Contractor : Hitachi Rail

Project Value : M.SAR 122.5



SELECTED PROJECT REFERENCES

SHUQAIQ R.O DESALINATION PLANT - PHASE 3

E&I Installation Work for R.O Desalination Plant and
132KV SUBSTATION

Capacity: 450,000 m³/day

Client :- Saudi Water Partnership Company (SWPC)

Main Contractor : ACCIONA

Project Value :- M.SAR 30



SELECTED PROJECT REFERENCES

SEC POWER PLANT PP-13 - DHURUMA

Electrical and I & C Works for Combined Cycle Power Plant – 2,000 MW

Client : Saudi Electric Company (SEC)

Main Contractor : GAMA Power Systems

Project Value : M.SAR 70



SELECTED PROJECT REFERENCES

SHOAIBAH-III EXPANSION-III DESALINATION PLANT



Electrical and I&C Assembly

Client : ACWA Power

Main Contractor : Fisia Abeima LLC

Project Value : M.SAR 30

SELECTED PROJECT REFERENCES

JEDDAH SOUTH THERMAL POWER PLANT - STAGE 1

Electrical & Instrumentation Work for Power Block # 1
& # 3, Unit, STG & Boiler Area – 660 MW (Each Unit)

Client : Saudi Electric Company (SEC)

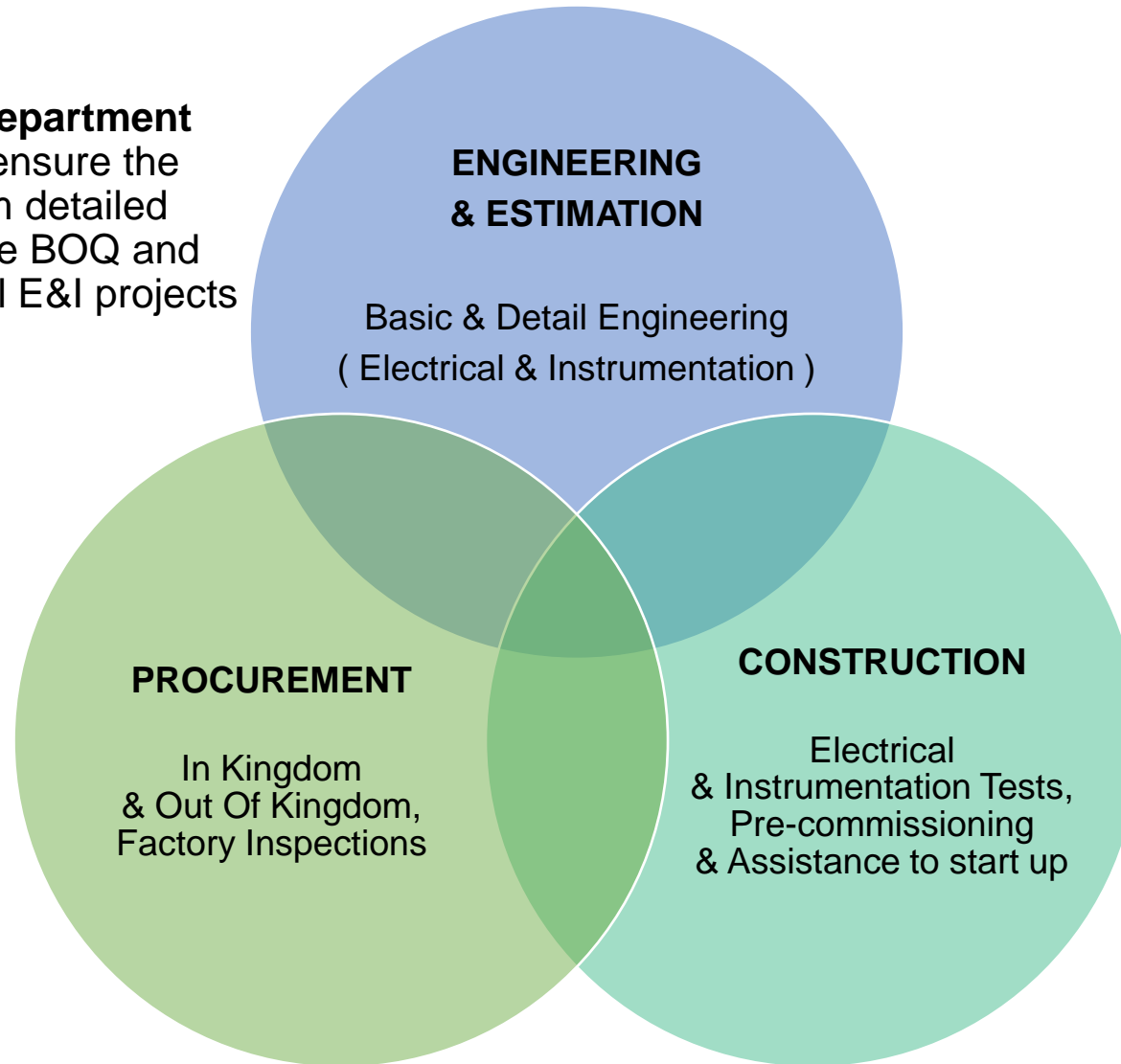
Main Contractor : Hyundai Heavy Industries

Project Value: M.SAR 81



OPTIMIZATION OF SYNERGIES

Engineering & Estimation Department has the required expertise to ensure the complete bidding process from detailed design to the elaboration of the BOQ and costs estimation required in all E&I projects



Procurement Department has also the technical capacity of conducting factory inspections to guarantee the compliance with NMR, FAT, technical specifications and to ensure timely deliveries

Construction starts with the swift organization of the logistics, and the progressive mobilization of manpower and equipment at site. CGA has camps with capacity for over 2,000 people and construction equipment and facilities (warehouses/ workshops).

ACCOUNTABILITY

**FOCUSED MANAGEMENT
&
DEDICATED HUMAN
RESOURCES**

**Skills, Knowledge
& Responsiveness**

**HEALTH, SAFETY,
ENVIRONMENT
&
QUALITY
ASSURANCE**

**Awareness
& Commitment
In House
Continuous Training**

**SPECIAL
EQUIPMENT
&
LOGISTICS**

**Advanced Technology,
Flexibility of Mobilization**

PROJECT REFERENCES – ONGOING & PAST 10 YEARS - (OIL/GAS & PETROCHEM)

#	INDUSTRY	PROJECT	COUNTRY	LOCATION	OWNER	MAIN CONTRACTOR	SCOPE OF WORK	AMOUNT MLN USD	PERIOD OF EXECUTION	TYPE OF CONTRACT
1	OIL/GAS & PETROCHEM	UMM WU'AL PHOSPHORIC ACID PLANT PROJECT.	KSA	TURAIIF	MA'ADEN	HANWHA SAUDI CONTRACTING CO. LTD.	INSTRUMENTATION WORKS.	13	JUL-15 / DEC-16	Lump Sum U.R.
2	OIL/GAS & PETROCHEM	RABIGH II-IK-EPC FOR COMMON UTILITIES AND TANK FARM.	KSA	RABIGH	PETORABIGH (S/ARAMCO - SUMITOMO)	PETROFAC SAUDI ARABIA CO. LTD.	E & I Works Related to Rabigh II-IK-EPC for Common Utilities and Tank Farm.	7,53	NOV-14 / DEC-16	Lump Sum U.R.
3	OIL/GAS & PETROCHEM	YERP UTILITIES PACKAGE - SP4.	KSA	YANBU	YASREF	BONATTI	Electrical, Instrumentation & Telecommunication Works.	13,06	APR-13 / JUN-15	Lump Sum U.R.
4	OIL/GAS & PETROCHEM	SADARA GAS SUPPLY PROJECT	KSA	JUBAIL	SABIC	ETEC Arabia Limited Company.	Electrical & Instrumentation Works for SADARA Gas Supply Project.	2,87	FEB-14 / JAN-15	Lump Sum U.R.
5	OIL/GAS & PETROCHEM	JERP PACKAGE 8 CONVEYOR BELT SYSTEM.	KSA	JUBAIL	SATORP	GCC (KSA)	E&I installation for the Conveyor System & Transfer Towers of the raw coke from JER to Jubail port(24km)	28,1	OCT-12 / JUN-13	Lump Sum U.R.
6	OIL/GAS & PETROCHEM	SHAYBAH PACK. 4	KSA	SHAYBAH	SAUDI ARAMCO	SAMSUNG (Korea)	E& I GOSP 1, 2 3 & 4	46,06	MAR-12 / DEC-15	Lump Sum U.R.
7	OIL/GAS & PETROCHEM	JERP Package 5 OFFISTE & UTILITIES	KSA	JUBAIL	SATORP	TECHNIP (Italy)	E&I works, supply of bulk material	30,5	NOV-10 / DEC-13	Lump Sum U.R.
8	OIL/GAS & PETROCHEM	JERP PACKAGE 3 AROMATICS.	KSA	JUBAIL	SATORP	SAMSUNG (Korea)	E&I works, supply of bulk material	21,07	OCT-10 / JUN-13	Lump Sum U.R.
9	OIL/GAS & PETROCHEM	REPLACE OF 6 MOTORS 27,000HP.	KSA	UTHMANIYAH & SHEGUM	SAUDI ARAMCO	BONATTI	E&I works with Engineering, Procurement & Commissioning	7,24	MAY-09 / MAY-12	LSPB
10	OIL/GAS & PETROCHEM	UPGRADE ABU ALI.	KSA	ABU ALI	SAUDI ARAMCO	BONATTI	E&I Works, Eng. & Comm. for the installation of 3 water injection pumping trains. New WOSEP. Upgrading onshore Control Room. Replacement of 2 new DCS 7 SCADA. Replacement of ESD	19,82	FEB-09 / OCT-12	LSTK
11	OIL/GAS & PETROCHEM	FLARE SYSTEMS.	KSA	UTHMANIYAH & SHEGUM	SAUDI ARAMCO	BONATTI	E&I works, engineering & commissioning	14,47	FEB-09 / OCT-12	LSTK
12	OIL/GAS & PETROCHEM	SHAYBAH CENTRAL PROCESSING FACILITIES.	KSA	SHAYBAH	SAUDI ARAMCO	NESMA for SNC LAVALIN (CDN)	E&I works and pre-commissioning	10,72	MAR-08 / APR-09	LSTK
13	OIL/GAS & PETROCHEM	OPTIMIZE PRODUCTION AT MUBARRAZ AREA.	KSA	MUBARRAZ	SAUDI ARAMCO	BONATTI	GOSP- Optimizing the production. E & I works	6,79	SPT-07 / SPT-09	LSPB
14	OIL/GAS & PETROCHEM	RABIGH DEVELOPMENT PROJECT.	KSA	RABIGH	PETORABIGH (S/ARAMCO - SUMITOMO)	NESMA for TECNICAS REUNIDAS (SP)	MS2 PACKAGE- E& I works including 4 25MVA transformers, erection of MV/LV bus ducts, switchgears & control blgs.	16,12	APR-07 / FEB-09	Lump Sum U.R.
15	OIL/GAS & PETROCHEM	YANSAB OLEFINS PLANT.	KSA	YANBU	YANSAB (SABIC)	TECHNIP (Italy)	Instruments installation and pre-commissioning including supply of bulk material	16,24	APR-07 / APR-09	Lump Sum U.R.
16	OIL/GAS & PETROCHEM	DCS UPGRADE PROJECT	KSA	JEDDAH	LUBEREF	Consortium CARLO GAVAZZI ARABIA / ARIS	Design, Engineering & Installation of DCS/ESD system, fire detection, gas detection, HSDD systems & electrical installations. EPC of UPSX & Inverter and Distribution system. Pre-commissioning, Hot cut	3,04	OCT-05 / OCT-07	Lump Sum

PROJECT REFERENCES – ONGOING & PAST 10 YEARS – POWER

#	INDUSTRY	PROJECT	COUNTRY	LOCATION	OWNER	MAIN CONTRACTOR	SCOPE OF WORK	AMOUNT MLN USD	PERIOD OF EXECUTION	TYPE OF CONTRACT
17	POWER	E&I&C Assemblies for HRSGs, ACC and WTP At Waad Al Shamal ISCCPP Project.	KSA	TURAIIF	SEC	GE	Services of E&I&C Assemblies for HRSGs, ACC and WTP.	29	APR-17 / DEC-20	Lump Sum U.R.
18	POWER	SEC POWER PLANT PP-13	KSA	RIYADH	SEC	GAMA POWER SYSTEMS ARABIA LTD.	Electrical and I & C Works associated with power island ME & I and Equipment installation works.	15,82	JUN-16 / JUL-18	Lump Sum U.R.
19	POWER	JEDDAH SOUTH THERMAL POWER PLANT STAGE - 1	KSA	JEDDAH	SEC	HYUNDAI HEAVY INDUSTRIES CO. LTD	Electrical & Instrumentation Work for Power Block # 1 & # 3, Unit, STG & Boiler Area.	21,86	NOV-14 / DEC-16	Lump Sum U.R.
20	POWER	REPLACEMENT OF DCDB & ACDB FOR 15 SUBSTATIONS IN CENTRAL AREA	KSA	CENTRAL REGION	SEC	CARLO GAVAZZI ARABIA	Installation of ACDB and DCDB panels in 15 substations (Riyadh/Al Kharij/ Qassim)	1,03	JUL-12 / MAR-14	Lump Sum U.R.
21	POWER	SHOAIBA PP STAGE III	KSA	SHOAIBA	SEC	ALSTOM POWER CENTRALES (France)	Engineering, Procurement and Construction of small power & Lighting systems	12,53	DEC-09 / MAY-11	Turnkey Lump Sum & U.R.
22	POWER	SHOAIBA PP STAGE II PH. 1&2	KSA	SHOAIBA	SEC	ALSTOM POWER CENTRALES (France)	Construction of 6 x 350MW PP and related utilities	32,45	DEC-04 / MAY-08	Lump Sum U.R.
23	POWER	SHOAIBA PP STAGE II PH. 2	KSA	SHOAIBA	SEC	ALSTOM POWER CENTRALES (France)	Construction of 6 x 350MW PP and related utilities	26,43	MAR-05 / MAY-08	Lump Sum U.R.
24	POWER	AL THURAYA 34.5/11kV S/S	KSA	AL HASSA	SEC	CARLO GAVAZZI ARABIA	Design, Engineering, Procurement, Construction and test commissioning of the Thuraya 34.5/11kV S/S in Mubarraz area	4,38	AUG-02 / APR-05	Lump Sum U.R.
25	POWER	YANBU GAS PLANT EXPANSION PROJECT	KSA	YANBU	SAUDI ARAMCO	PETROJET (Egypt)	E&I works, testing & pre -commissioning. Installation of MV transformer, Switchgear, MCC's and complete instruments including DCS.	5,8	MAY-07 / MAR-09	Lump Sum U.R.
26	POWER	REPLACEMENT OF OFF SHORE ELECTRICAL EQUIPMENT	KSA	AL KHAFJI	KJO	CARLO GAVAZZI ARABIA	Replacement of the existing electrical installations of Al Khafji and Ratawi oil off shore production in the Arabian Gulf. Provide marine equipments. All basic /detailed engineering. Installation, pre-commissioning & commissioning. Works on flow stations Y3 and Y4.	19,09	SEP-04 / JAN-05	LumpSum
27	POWER	MADINAT YANBU AL SINAIYAH STEAM PP Unit 4	KSA	YANBU	ROYAL COMMISSION	ENELPOWER (Italy)	E&I EPC and commissioning. Transformer 25 MVA & 2.2. Switchgears MV/LV; MCC; Field instruments; DCS (Honeywell)	5,49	JUL-02 / APR-05	Unit Rates

PROJECT REFERENCES – ONGOING & PAST 10 YEARS – WATER

#	INDUSTRY	PROJECT	COUNTRY	LOCATION	OWNER	MAIN CONTRACTOR	SCOPE OF WORK	AMOUNT MLN USD	PERIOD OF EXECUTION	TYPE OF CONTRACT
28	WATER	SHUQAIQ R.O DESALINATION PLANT - PHASE 3 - 450,000 m3/day	KSA	SHUQAIQ	SWPC / (Marubeni & Rawafid & Abdullatif Jameel)	ACCIONA	E&I Installation Work for R.O Desalination Plant and 132KV SUBSTATION	6,67	JUL-20 / FEB-21	Lump Sum
29	WATER	Shuaibah-3 Second Water Expansion Seawater Desalination Plant.	KSA	SHUAIBAH	Shuaibah Two Water Development Project Co.	Fisia Abeima LLC.	Electrical and I & C Assembly.	7,41	MAR-18 / JAN-19	Lump Sum U.R.
30	WATER	SIDEM's MARAFIQ SWRO Plant in SADARA Complex Jubail-2	KSA	JUBAIL	MARAFIQ / SADARA	BONATTI	Electrical & Instrumentation Works.	14,5	FEB-14 / DEC-15	Lump Sum U.R.
31	WATER	YANBU IWTP II	KSA	YANBU	MARAFIQ	SETE ENERGY	Electrical & Instrumentation Works.	8	MAR-11 / OCT-12	Unit Rates
32	WATER	JUBAIL IWTP 8	KSA	JUBAIL	MARAFIQ	SETE ENERGY	Electrical & Instrumentation Works.	9,78	OCT-10 / JUL-11	Unit Rates
33	WATER	RENOVATION & URGENT MODIFICATION WTF	KSA	AL KHAFJI	KJO	SETE ENERGY / FOSTERWHEELER / CGA	EPC for Renovation & urgent modification of existing facilities	13,23	DEC-09 / DEC-11	Lump Sum
34	WATER	SHUAIBA IWPP	KSA	SHOAIBA	SWCC	ANSALDO CALDAIE (Italy)	E&I supply and erection works for 3 units boilers, 1 unit auxiliary boiler, 3 units ESP & Fly Ashes Removal System	6,25	JAN-08 / JUL-09	Lump Sum + Unit Rates
35	WATER	KAUST- King Abdullah University - Tuwal	KSA	THUWAL	KAUST / Aramco	NESMA / SETE	Engineering, Procurement and installation for the E&I works for the desalination plant.	5,33	FEB-08 / MAY-09	Lump Sum / Cost Plus
36	WATER	1.5MMGDP MSF SEAWATER DESALINATION PLANT & FRESH WATER TANK	KSA	AL KHAFJI	KJO	SETE ENERGY / FOSTERWHEELER / CGA	Build a 1.5 million Gallon per day multistage flash seawater desalination unit. Design, Engineering, Procurement, Construction, Pre-commissioning & Commissioning	40,4	MAR-05 / OCT-07	Lump Sum
37	WATER	RABIGH DESALINATION PLANT	KSA	RABIGH	SAUDI ARAMCO	SETE ENERGY & ACQUATECH	EPC for Mechanical, Electrical & Instrumentation and maintenance for a desalination plant 10,000 cub mtrs/day	7,91	MAR-04 / JUN-05	BOOT

PROJECT REFERENCES – ONGOING & PAST 10 YEARS – INFRASTRUCTURE

#	INDUSTRY	PROJECT	COUNTRY	LOCATION	OWNER	MAIN CONTRACTOR	SCOPE OF WORK	AMOUNT MLN USD	PERIOD OF EXECUTION	TYPE OF CONTRACT
38	INFR	King Abdullah Financial District (KAFD)	KSA	RIYADH	KAFD	BINLADIN GROUP	Installation of E & I Works	5	NOV-19 / OCT-20	Hourly Rates
39	INFR	RIYADH METRO LINE 3.	KSA	RIYADH	RIYADH PUBLIC TRANSPORT	Salex ES Saudi Arabia Ltd.	The Implementation of a Metro Telecommunication Security and SCADA System.	3,19	OCT-18 / NOV-19	Unit Rates
40	INFR	RIYADH METRO LINE 3. Installation of Platform Screen Doors.	KSA	RIYADH	RIYADH PUBLIC TRANSPORT	FAIVELEY Transport Far East Ltd.	Project Management, Transportation, Warehouse, Site survey, Setting-out, installation, Electrical Connections, Testing & Commissioning Support and related Documentation.	4,05	JUN-18 / AUG-20	Lump Sum U.R.
41	INFR	KAIA - Jeddah Airport - Development Project Phase 1	KSA	JEDDAH	GACA	BINLADIN GROUP Advanced Vision Co.	Installation of Electrical works	10,2	FEB-17 / DEC-20	Unit Rates
42	INFR	Riyadh Metro Project Line 3, Package B	KSA	RIYADH	RIYADH PUBLIC TRANSPORT	Hitachi Rail	Installation Activities of Electro-Mechanical Works for Riyadh Metro Project Line 3, Package B	25,4	NOV-16 / DEC-20	Unit Rates
43	INFR	AUTOMATED PEOPLE MOVER – PNUW	KSA	RIYADH	MINISTRY OF FINANCE	ANSALDO STS (Italy)	Engineering, supply and erection of Power, ATC system, SCADA, 3 rd rail , Telecom	11,99	APR-10 / JUL-11	Lump Sum U.R.
44	INFR	CABLE FACTORY	KSA	RABIGH	AL SUWAIDI	NESMA	E&I works, field engineering & pre-commissioning	2,67	DEC-08 / MAY-09	Lump Sum
45	INFR	HADEED DIRECT REDUCTION PLANT EXPANSION	KSA	JUBAIL	HADEED (SABIC)	SAUDI VOEST ALPINE	E&I works : installation and supply of electrical materials, Installation of 2500MVA to 160 KVA transformers, switchgears/MCC, lighting, fire alarm system, DCS system/PLC automation . Furnace electrification. Testing & pre-commissioning.	6,91	MAY-06 / OCT-07	Lump Sum U.R.

CLIENTS' QUALIFICATIONS

SAUDI ARAMCO	Vendor # 10006752
SEC	Vendor # 1000354
SABIC	Vendor # 501382
MARAFIQ	Vendor # 337
KJO	Vendor # 100705
PETRORABIGH	Vendor # 100100
SASREF	Vendor # 1001200
YASREF	Vendor # 100672
MAADEN	Vendor # 39352
ALBA	Vendor # 8321
EWA	Vendor # 11931701



KUWAIT GULF OIL COMPANY



Aramco Gulf Operations

AL KHAFJI JOINT OPERATIONS عمليات الخفجي المشتركة

ADDRESS & CONTACTS



Carlo Gavazzi Arabia Co. Ltd.
85, Mohd. Ali Al- Harkan Str. – Al Andalus District
P.O. Box 15291 - Jeddah 21444
Kingdom of Saudi Arabia



Tel: (+966) -12- 6611637 / 6696019 / 6635664
Fax: (+966) -12- 6611873



info@carlogavazziarabia.com
www.carlogavazziarabia.com.sa
www.carlogavazzi.it